



Velkommen til Oppland

Welcome to Oppland



- Area: approx. 25.000 km²
- Inhabitants: approx. 180.000
- Municipalities: 26
- Regions: 6
Hadeland, Gjøvik, Lillehammer, Valdres,
Midt-Gudbrandsdal, Nord-Gudbrandsdal
- Towns: 4
Lillehammer, Gjøvik, Fagernes, Otta





- 80 % above 600 m above sea level
- No coastline or national border
- Norway's biggest lake, Mjøsa
- Norway's highest mountain, Galdhøpiggen
- Typical inland climate
- Historically an agricultural county





- Business structure
 - Most SMEs
 - Public administration is the biggest employer
 - Few large companies (Raufoss)
- Tourism





- Festivals
 - The Norwegian Festival of Literature
 - The Peer Gynt Festival
- Traditions
 - Stave churches
 - 600 protected buildings
 - Many archaeological findings





- The biggest number of cabins in Norway
- Famous attractions
 - Maihaugen
 - Hunderfossen Family Park
 - Hadeland Glass Factory
 - Olympic arenas
 - Skibladner





- Communications
 - Roads
 - Railway
 - Airport
- Broadband





- University project
- University colleges
- Upper secondary education
- Special offers
 - NTG (The Norwegian College of Elite Sport)
 - Nansenskolen (Norwegian Humanistic Academy)





Three levels:

- Central government
- County authority (19)
- Municipality (430)





- County Council – 37 elected repr.
- County Executive Board – 9 repr.
- Committees since the 2007 election:
 - The Municipal Committee
 - The Regional Committee
 - The International Committee



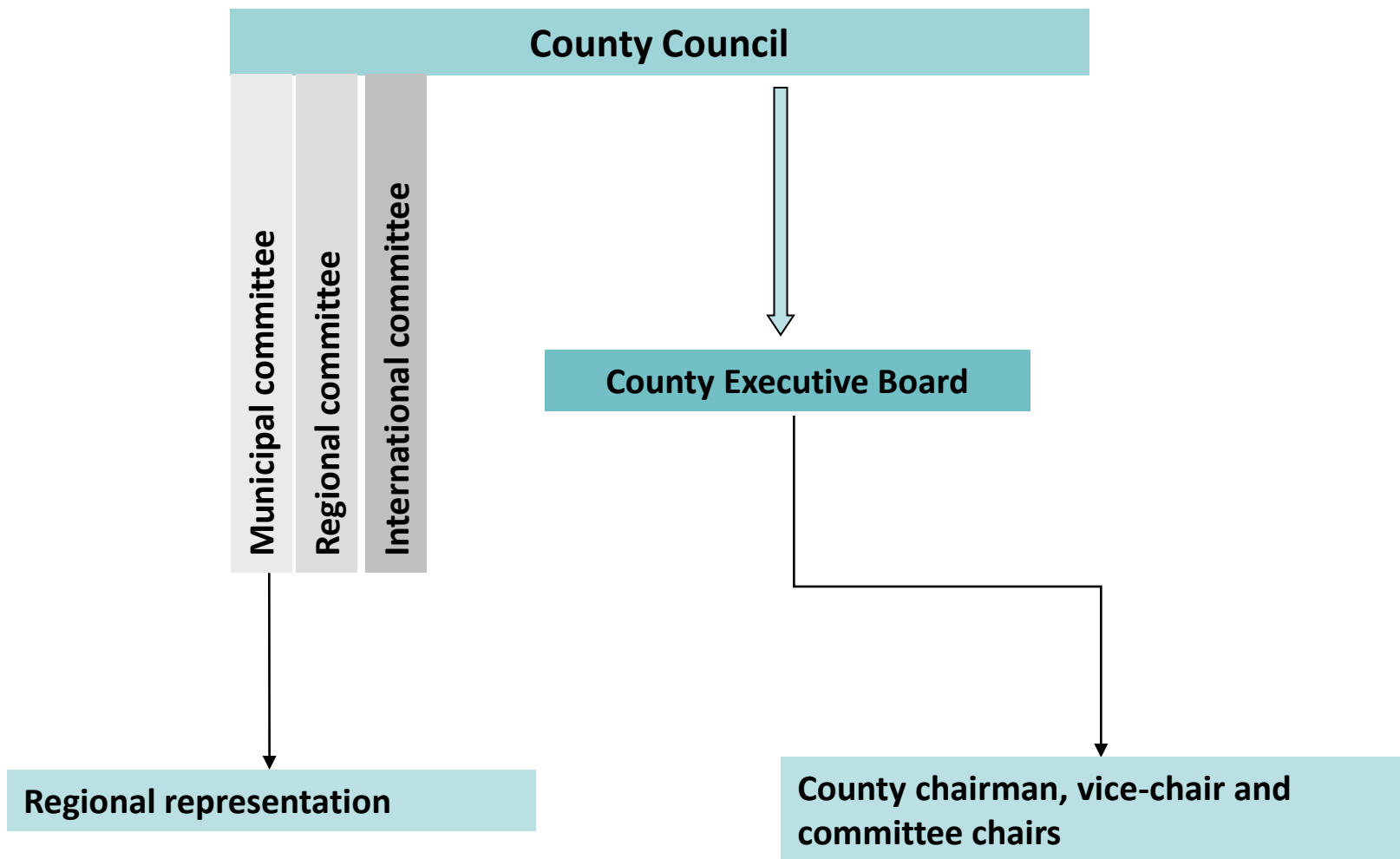
Audun Tron, Labour Party
Chair of the County Council

Parties in the County Council:

- Labour Party
- Conservative Party
- Centre Party
- Christian Democratic Party
- Liberal Party
- Socialist Left Party
- Progress Party



Political organisation





- Many tasks are delegated
- Departments, teams and networks
- Partnership agreements with the municipalities/regions





Chief County Executive Group

Rasmus Olav Vigrestad, CCE
Terje Kind
Inge Myklebust
Hjalmar Solbjør

CCE advisers

- Information
- Purchasing, law, control
- Political secretariat
- Ownership

Departments

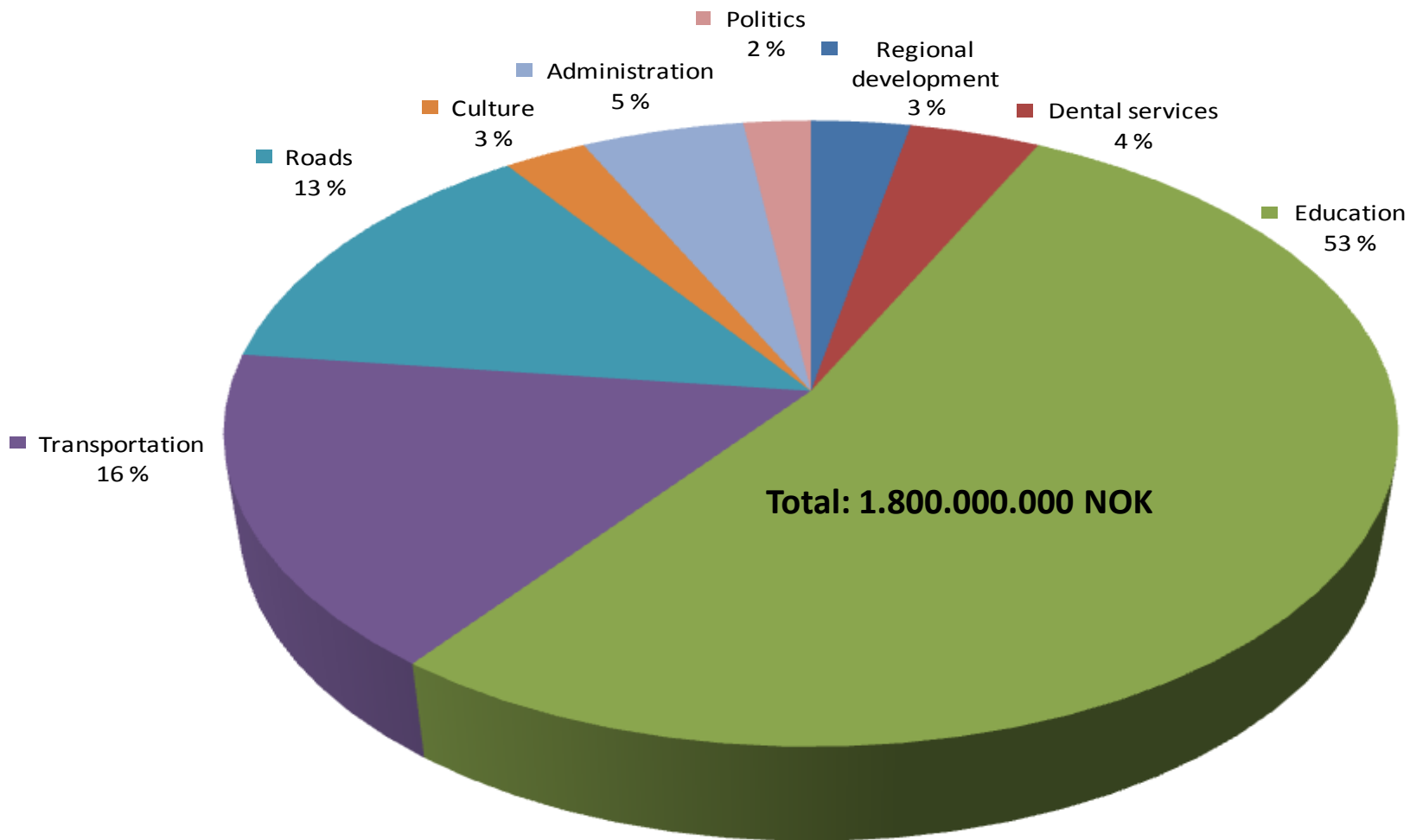
- Upper secondary education – 13 schools, 4 teams, 6 career centers
- Opplandstrafikk – 3 teams
- Regional development – 4 teams
- Culture
- Cultural heritage
- Dental services – 25 dental clinics
- County library
- County archive
- Property
- ICT
- Human resources
- Finances
- Archive (central adm.)
- Service center

Teams and networks

- Learning team/network
- Info network
- International network



Economics





Employees and ownership

- Approx. 1850 employees in total
- Approx. 200 employees in the central administration
- Oppland County authority is co-owner of approx. 25 companies





Upper secondary education

- 13 upper secondary schools
- Vocational education
- 2 folk high schools
- Career centres
- Adult learning





- Responsible for public transport
- Transport of school children
- Transport for disabled and less mobile people
- Service rides and dial-a-ride
- Transport licences





- Competence within
 - Regional industrial and commercial development
 - Environmental and social planning
 - Strategic transport
- Organize for increased creation of value and readjustment
- Tourism development





- Festivals
- Film
- Culture for children and youth
- Artist support
- Culture and business
- International relations
- Public health and sports





- Administration of national and regional cultural heritage
- Distribute financial support to protected buildings
- Distribute financial support to museums





Responsible for providing free dental care to:

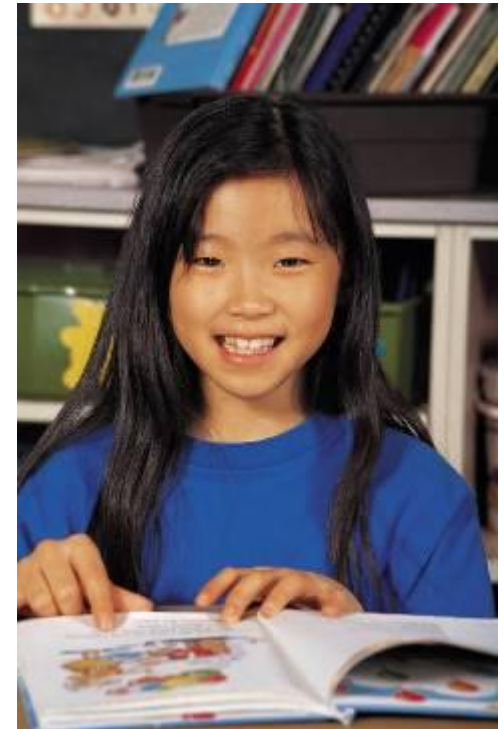
- Children and youth 0-18 years
- Mentally disabled
- The elderly, disabled and long term ill in institutions and community nursing

- 25 clinics
- Difficult to recruit dentists because of the decentralised structure





- Initiate library development in the county
- Coordinate library projects
- Competence centre
- Projects
 - Stepping Stones
 - "Det sømløse bibliotek"
 - Author web Oppland
 - Learning computing in the library





- Depot for archives that are not in daily use
- Storage of archives for 34 municipalities in Oppland and Hedmark
- Development of Kulturnett





- International strategy adopted by the County Council in Oct 2008
- Active participation in European policy development
- Contribute to increased internationalisation in Oppland
- Participation in international organisations
- Bilateral cooperation agreements
- International committee

